

# GENERAL NOTES

1. PANEL SURFACES: ALUMINUM.
2. PANEL FILL: MINERAL WOOL
3. MATERIAL FINISH: POWDER COATING FOR ALUMINUM.

SOUND TRANSMISSION LOSS PER ASTM E90. SOUND ABSORPTION PER ASTM C423.

4.

SOUND TRANSMISSION COEFFICIENTS STC 30 ALUMINUM;							
HZ	125	250	500	1000	2000	4000	
AF 1	16	16	27	39	40	35	FULL OCTAVE (ALUMINUM)

SOUND ABSORPTION COEFFICIENTS:

HZ	125	250	500	1000	2000	4000	
AF 1	0.45	1.03	1.13	1.02	1.00	0.84	NRC 1.05

POSTS, FOUNDATIONS AND ALL ASSOCIATED HARDWARE BY OTHERS.

5. DESIGN SPECIFICATIONS: 1989 AASHTO "GUIDE SPECIFICATIONS FOR THE STRUCTURAL DESIGN OF SOUND BARRIERS" AND DESIGN DIVISION 1 OF 1992 AASHTO
6. "SPECIFICATIONS FOR HIGHWAY BRIDGES", OR PER PROJECT REQUIREMENTS.

STANDARD POST SPACING IS 8' 0" FOR BRIDGE MOUNT, 10'-0" FOR TYPICAL APPLICATIONS. POST SPACING UP TO 16'-0" CAN BE CONSIDERED FOR SPECIAL

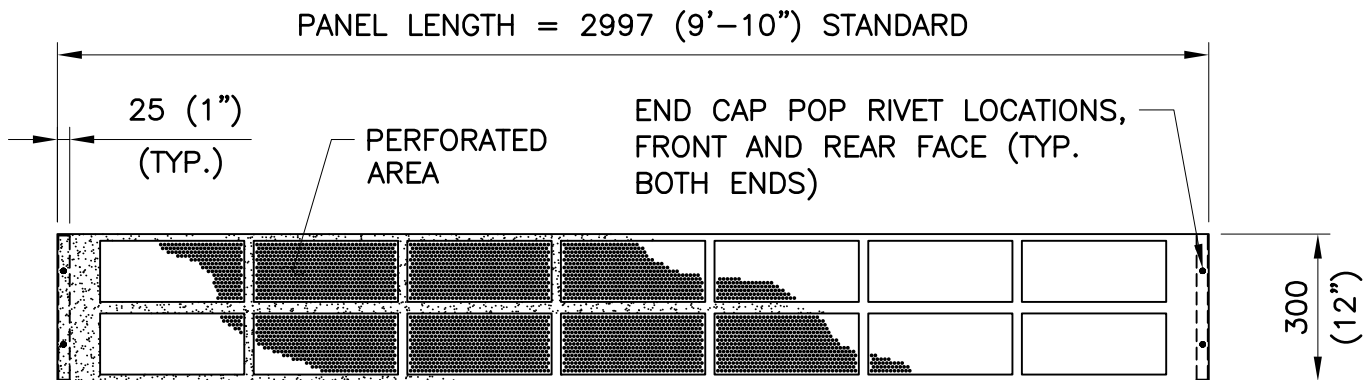
7. APPLICATIONS.

FOR SOUND ABSORPTION INSTALLATION ON EXISTING REFLECTIVE PRECAST CONCRETE

8. NOISE BARRIERS, OR OTHER HARD SURFACES, ATTACH PANELS AS SHOWN IN THE SOUND ABATEMENT RETROFIT DETAIL.

9. DIMENSIONS SHOWN IN ( ) ARE U.S. CUSTOMARY UNITS.

10. WEIGHT OF PANEL FOR DESIGN (INCLUDING ABSORPTIVE MATERIAL) IS:  
 14.5 KG/SM (3.0 LBS/SF) – ALUMINUM  
 PANEL WEIGHTS MAY VARY TO MEET ACOUSTICAL OR STRUCTURAL REQUIREMENTS.



PANEL ELEVATION VIEW

ACOUSTAX

GENERALNOTES

FADDIS CONCRETE PRODUCTS  
 3515 KINGS HIGHWAY  
 DOWNINGTOWN, PA 19355

Voice: 610-269-4685 Fax: 610-873-8431

PROJECT NO. PROJECT\_NO

DATE: DATE

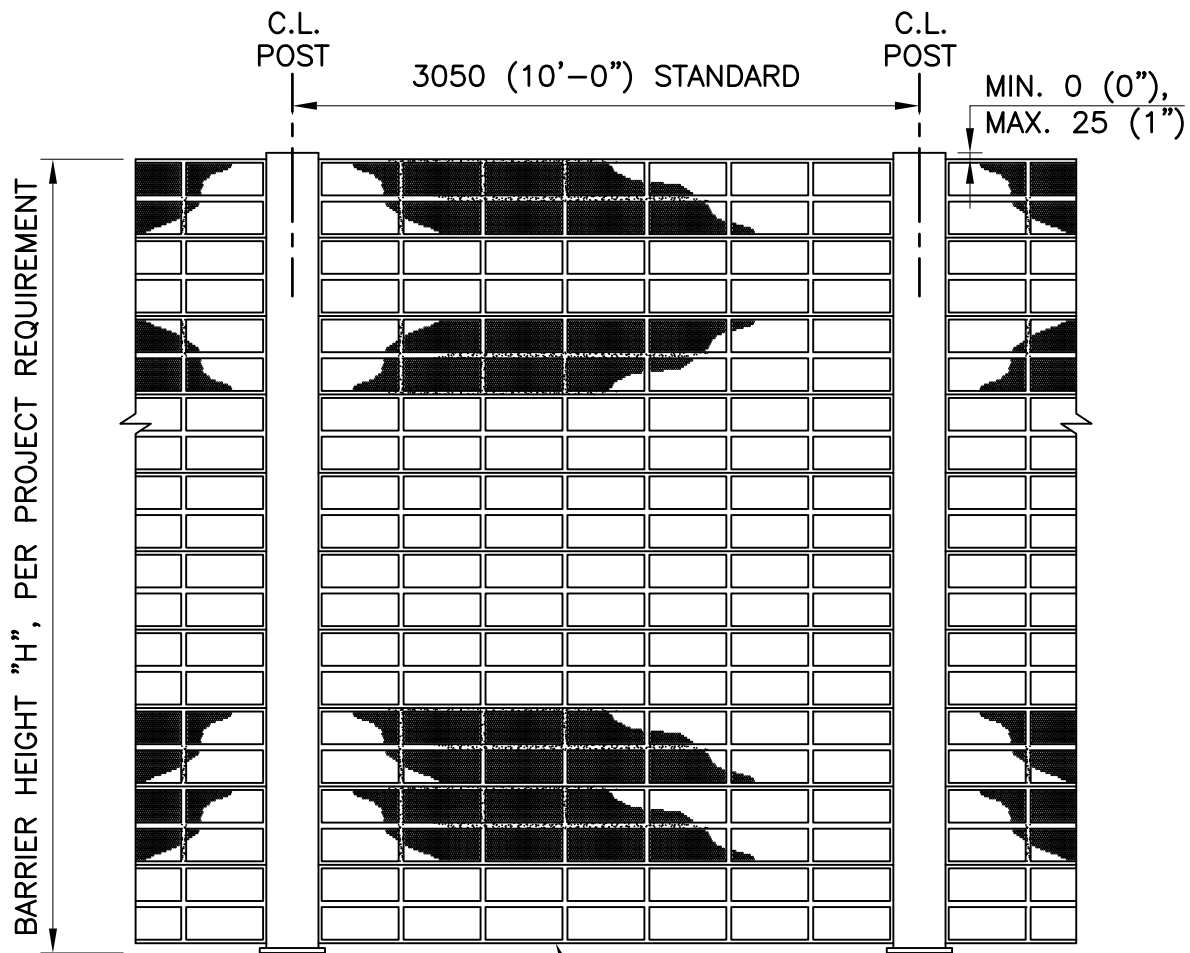
DR.BY: DR\_BY

CH.BY: CH\_BY

SCALE: SCALE

DRAWING NO.

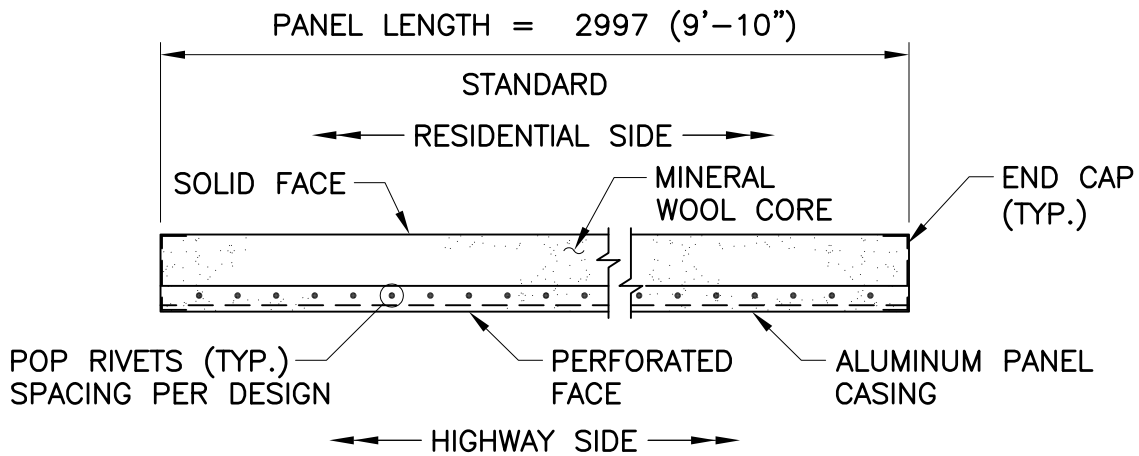
1 OF 4



STEEL BASEPLATE MOUNTED TO AN APPROPRIATE STRUCTURE OR GROUND FOUNDATION. BASE PLATE AND FOUNDATION DESIGN PER PROJECT REQUIREMENTS.

ACOUSTAX® SOUND BARRIER PANELS 300 (12") HIGH x 75 (3") WIDE x POST SPACING LESS 50 (2")

SOUND BARRIER ELEVATION



PANEL PLAN VIEW

ACOUSTAX

ELEVATION

FADDIS CONCRETE PRODUCTS  
3515 KINGS HIGHWAY  
DOWNTOWN, PA 19335

Voice: 610-269-4685 Fax: 610-873-8431

PROJECT NO. PROJECT\_NO

DATE: DATE

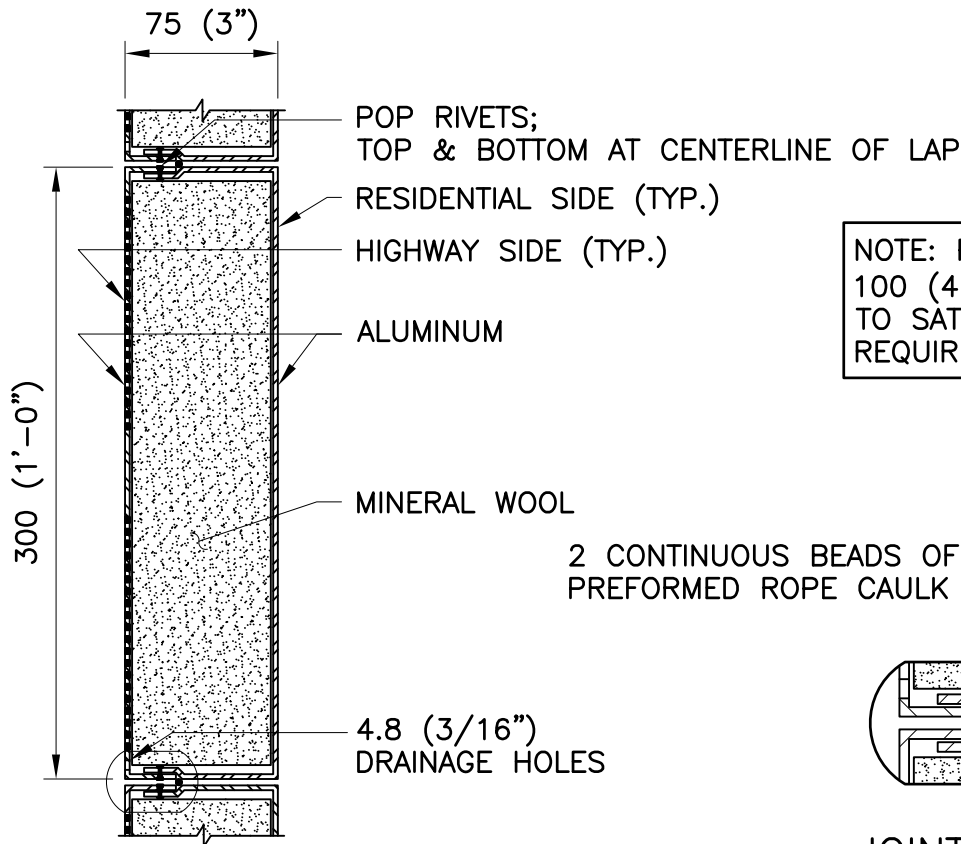
DR.BY: DR\_BY

CH.BY: CH\_BY

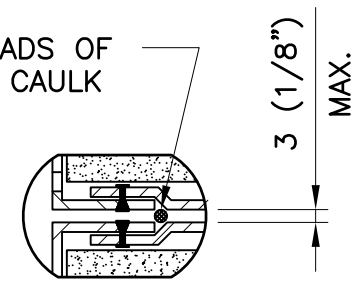
SCALE: SCALE

DRAWING NO.

2 OF 4

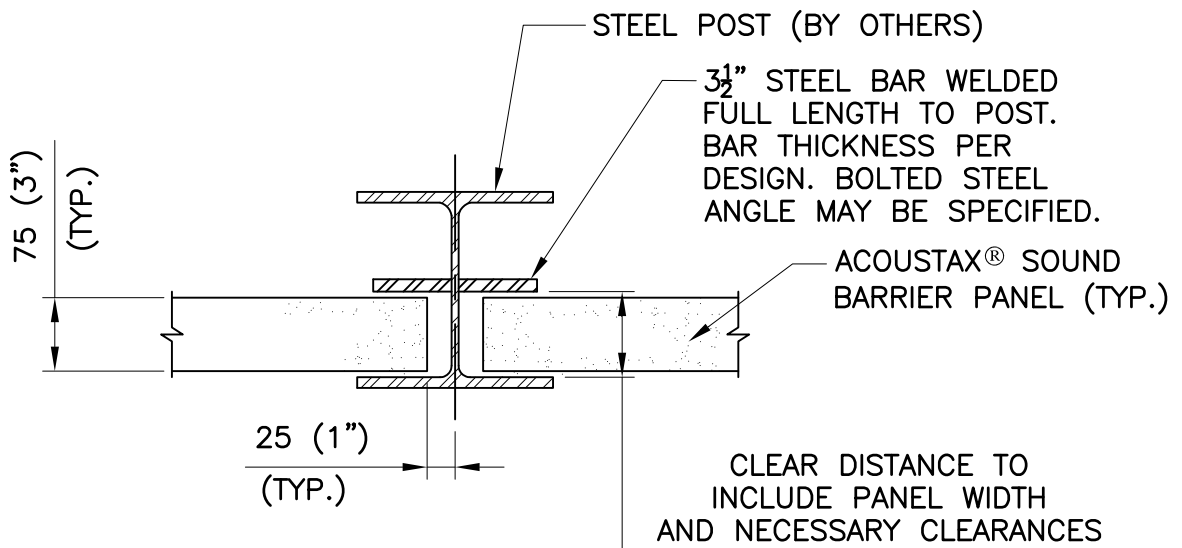


NOTE: PANEL WIDTH UP TO 100 (4") MAY BE SPECIFIED TO SATISFY PROJECT DESIGN REQUIREMENTS.



JOINT DETAIL

PANEL SECTION



POST AND PANEL SECTION

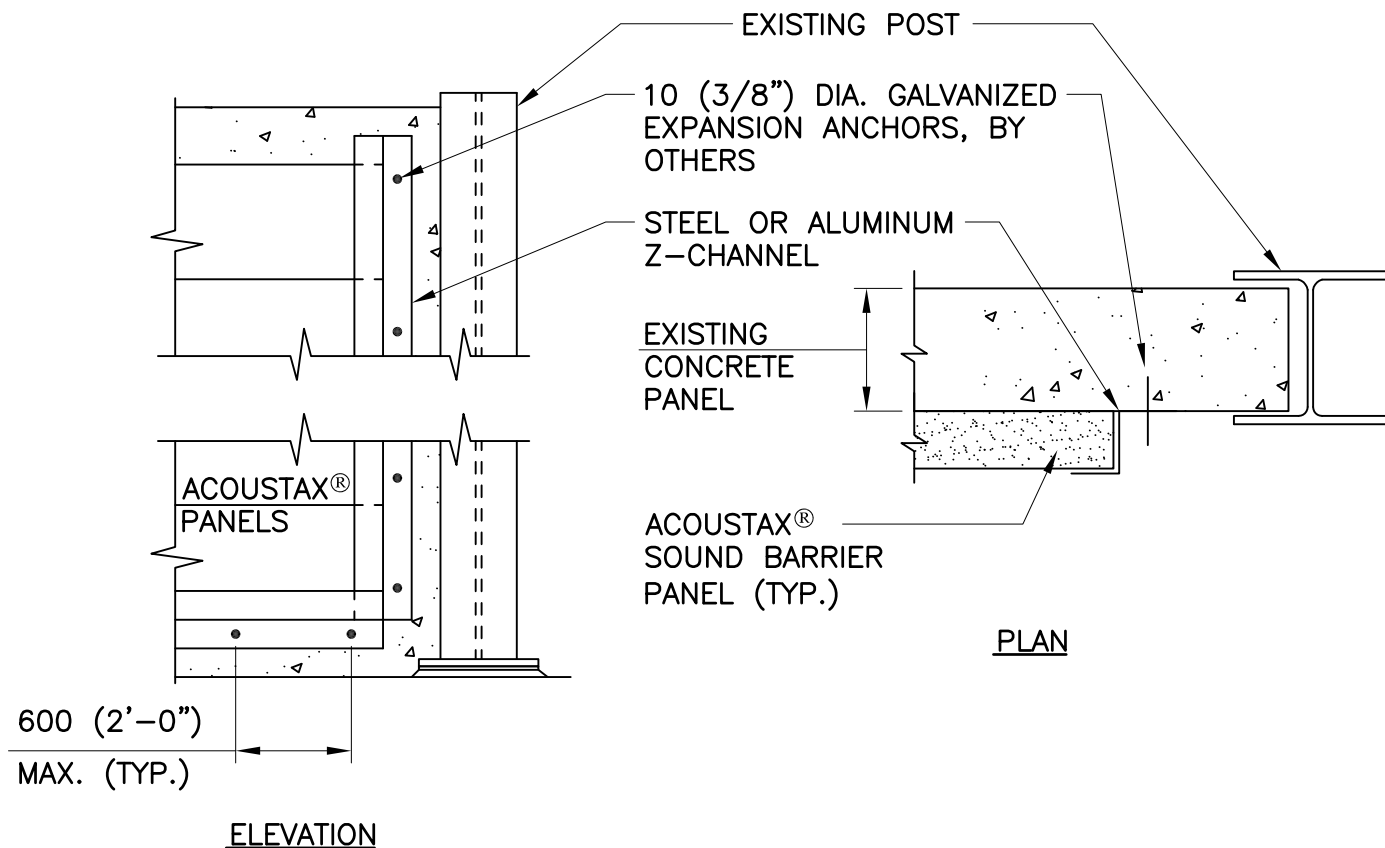
ACOUSTAX

SECTION

FADDIS CONCRETE PRODUCTS  
3515 KINGS HIGHWAY  
DOWNTOWN, PA 19335  
Voice: 610-269-4685 Fax: 610-873-8431

PROJECT NO. PROJECT\_NO  
DATE: DATE  
DR.BY: DR\_BY  
CH.BY: CH\_BY  
SCALE: SCALE

DRAWING NO.  
3 OF 4



SOUND ABSORPTION RETROFIT DETAIL

ACOUSTAX

RETROFIT

FADDIS CONCRETE PRODUCTS  
3515 KINGS HIGHWAY  
DOWNTOWN, PA 19335

Voice: 610-269-4685 Fax: 610-873-8431

PROJECT NO. PROJECT\_NO

DATE: DATE

DR.BY: DR\_BY

CH.BY: CH\_BY

SCALE: SCALE

DRAWING NO.

4 OF 4